

**Thermo Scientific Dionex ICS-900**  
Ion Chromatography System



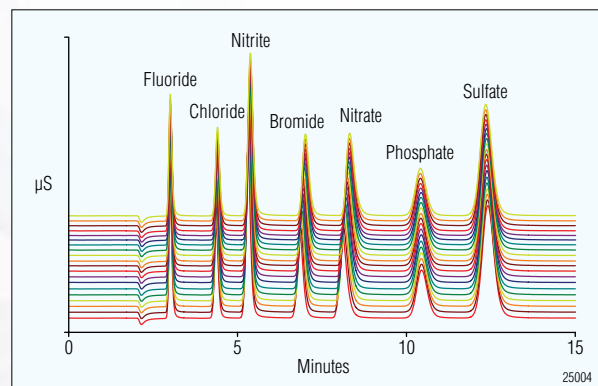
**Reliable, economical**  
**starter-line**  
**ion chromatograph**

**Thermo**  
SCIENTIFIC

## A compact, reliable ion chromatography system

The Thermo Scientific Dionex ICS-900 is an integrated, dual-piston, isocratic ion chromatography system that performs "no compromise" IC separations. The system is designed for ease of use, providing fast start up times and reliable, stable performance for your demanding applications. Built with the aim of maintaining low operating costs, the Dionex ICS-900 uses proven and reliable technologies to deliver results you can count on.

- Sensitive, stable, heated conductivity detection for precise results
- Thermo Scientific Dionex MMS 300 suppression with DCR technology for drift free baseline and ease-of-use
- Flexible pump flow range to support 2, 3, and 4 mm isocratic anion and cation columns
- Dual-piston, serial pumping system with PEEK™ flowpath for low maintenance costs and maximum up-time
- All-polymeric flow pathway to eliminate contamination and corrosion
- Thermo Scientific Dionex Chromeleon Chromatography Data System Software for full control, quality integration, and versatile reports to exceed all your data processing needs
- USB connectivity for fast, trouble-free instrument connection and configuration
- Integrated IQ/OQ/PQ to routinely assure the quality of your results
- Compatible with the Thermo Scientific Dionex AS-DV autosampler, for economical unattended operation, including sample filtration
- Compatibility with a broad range of polymeric separation columns for unparalleled application flexibility and reliability

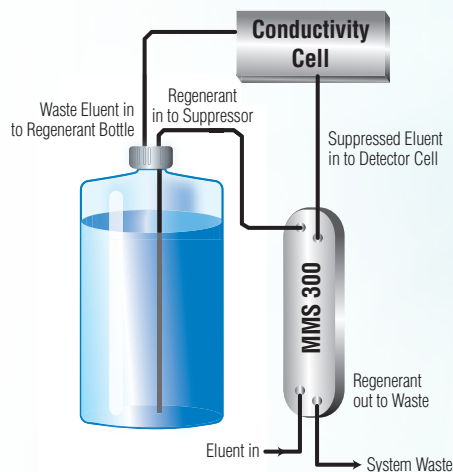


Stable baselines and quality, noise-free separations are the result of Dionex MMS™ 300 suppression, a low dispersion heated cell, and the proven high-speed dual-piston PEEK pumping system. Peak areas and retention times are highly reproducible, as demonstrated in these overlays of anion determinations (n=20).

- 1 Application and column flexibility: 2, 3, and 4 mm isocratic columns
- 2 Outstanding access to chromatography components
- 3 Ultra reliable, low carryover, electric Rheodyne injection valve
- 4 Dual piston, serial pumping system with stability from 0.1 to 5.0 mL/min at pressures to 5000 psi
- 5 Heated conductivity cell and Dionex MMS 300 suppressor for stable, noise-free results



## Easy-to-learn, adaptable software



Displacement chemical regeneration (DCR) mode uses the conductivity cell effluent to displace the regenerant, delivering regenerant to the suppressor at a flow rate equal to the eluent flow rate.

- The Dionex ICS-900 pump controls eluent and regenerant flow rate; no additional pump is required.
- Regenerant and eluent are used at the same rate; new regenerant is prepared when fresh eluent is installed.
- Low regenerant flow rate reduces waste and cost.

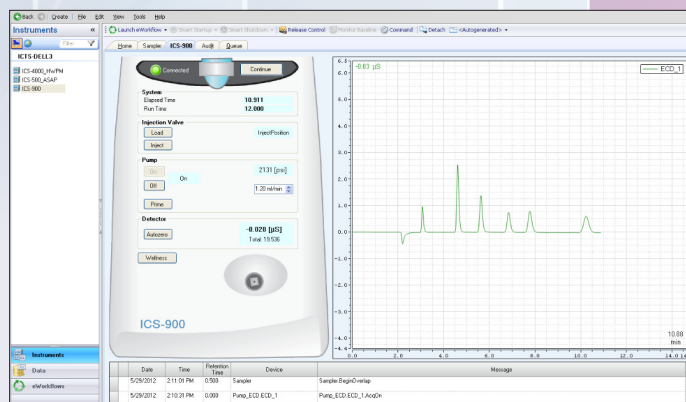
Chromeleon™ software combines the ideal blend of powerful data analysis capabilities with a logical, user friendly interface. Only Chromeleon software offers IC features like these:

- USB “plug-n-play” communication protocol provides seamless connections and easy module configuration.
- Customizable reporting structure for optimized data and results presentation.
- Storage of results in the secure, integral database allows you to find your data by any parameter through query functions.
- Audit trails log the details of instrument use. All manipulations are recorded and kept in a history file, making troubleshooting simple and GLP compliance more achievable.
- System Wellness provides on-line calibration and diagnostics to ensure optimum performance.
- Extensive array of advanced features allows you to adapt to changing needs, without getting in your way.

### Chromeleon Sequence Browser

#	ECID	Name	Type	Level	Position	Volume [µl]	Instrument Method	Processing Method	Status	Inject Time
1			Sample	Unknown	7	1500	Runs		Finished	5/24/2012 6:07:30 PM -07:00
2			Sample	Unknown	7	1500	Runs		Finished	5/24/2012 6:20:10 PM -07:00
3			None	Sample	Unknown	7	1500	Runs	Idle	
4			None	Sample	Unknown	7	1500	Runs	Idle	
5			None	Sample	Unknown	7	1500	Runs	Idle	
6			None	Sample	Unknown	7	1500	Runs	Idle	
7			None	Sample	Unknown	7	1500	Runs	Idle	
8			None	Sample	Unknown	7	1500	Runs	Idle	
9			None	Sample	Unknown	7	1500	Runs	Idle	
10			None	Sample	Unknown	7	1500	Runs	Idle	
11			None	Sample	Unknown	7	1500	Runs	Idle	
12			None	Sample	Unknown	7	1500	Runs	Idle	
13			None	Sample	Unknown	7	1500	Runs	Idle	
14			None	Sample	Unknown	7	1500	Runs	Idle	
15			None	Sample	Unknown	7	1500	Runs	Idle	
16			None	Sample	Unknown	7	1500	Runs	Idle	
17			None	Sample	Unknown	7	1500	Runs	Idle	
18			None	Sample	Unknown	7	1500	Runs	Idle	
19			None	Sample	Unknown	7	1500	Runs	Idle	
20			None	Sample	Unknown	7	1500	Runs	Idle	
21			None	Sample	Unknown	7	1500	Runs	Idle	
22			None	Sample	Unknown	7	1500	Runs	Idle	
23			None	Sample	Unknown	7	1500	Runs	Idle	
24			None	Sample	Unknown	7	1500	Runs	Idle	
25			None	Sample	Unknown	7	1500	Runs	Idle	

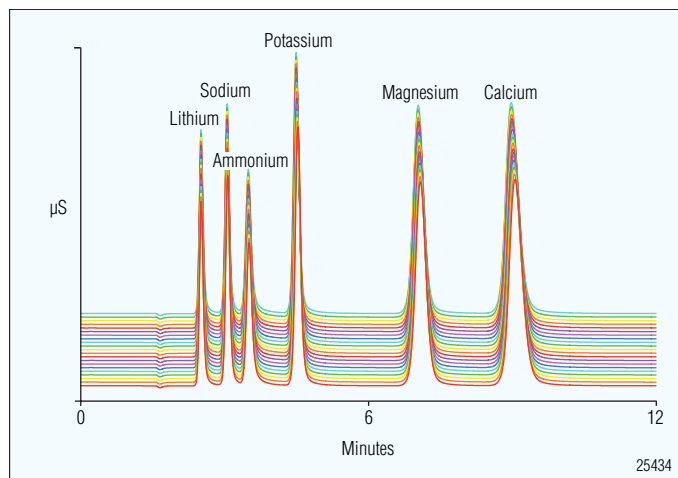
Chromeleon sequence browser—enter sample names, select a method, and run. The clear spreadsheet/browser style user interface is logical and easy to learn. It even allows simultaneous injections into two systems from one autosampler.



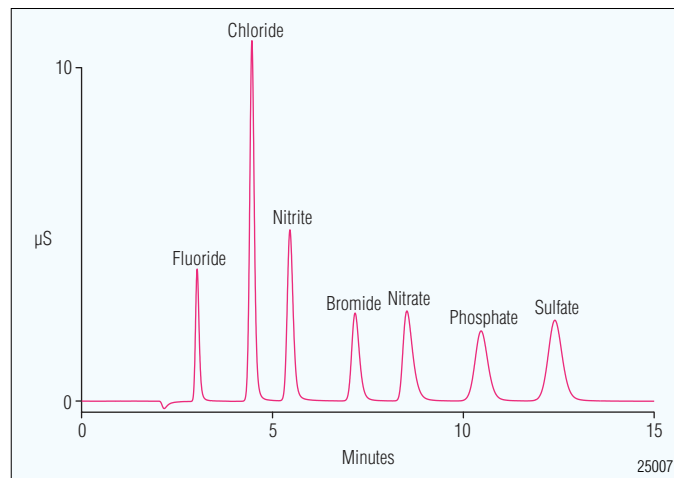
Chromeleon Instrument Control Panel. All you need to control and monitor the system on one easy-to-access screen.

# Analyze anions and cations

The Dionex ICS-900 provides column selection flexibility to meet all your application requirements.



Overlay of cation separations performed on the Dionex ICS-900 using a 3 mm Thermo Scientific Dionex IonPac CS12A cation-exchange column. Results show high reproducibility.



Dionex IonPac™ AS14 2 mm column for reduced reagent usage with high performance and fast separation.

<b>DIMENSIONS (H × W × D)</b>	33 × 24 × 40 cm (13 × 9.5 × 15.75 in.)
<b>WEIGHT</b>	10 kg (22 lbs.)

The Dionex ICS-900 has an all-polymeric flow path; adjustable flow rate range of 0.1 to 5.0 mL/min, 5000 psi maximum; bipolar-pulse heated conductivity cell; and digital signal processing for conductivities of 0 to 10,000 μS. Flexible applications with column selections for isocratic anion and cations columns. DCR Dionex MMS 300 suppression only. Autoranging power supply.

DESCRIPTION	PART NUMBERS
Dionex ICS-900 Ion Chromatography System, Chromeleon SE, with PC	067552
Dionex ICS-900 Ion Chromatography System, Chromeleon SE, without PC	067551
Dionex ICS-900 Ion Chromatography System, Expansion unit	067550

[www.thermoscientific.com](http://www.thermoscientific.com)

©2012 Thermo Fisher Scientific Inc. All rights reserved. PEEK is a trademark of Victrex PLC. ISO is a trademark of the International Standards Organization. All other trademarks are the property of Thermo Fisher Scientific Inc. and its subsidiaries. Specifications, terms and pricing are subject to change. Not all products are available in all countries. Please consult your local sales representative for details.



Thermo Scientific Dionex products are designed, developed, and manufactured under an ISO 9001 Quality System.

**Australia** +61 2 9420 5233  
**Austria** +43 1 616 51 25  
**Benelux** +31 20 683 9768  
 +32 3 353 42 94  
**Brazil** +55 11 3731 5140

**China** +852 2428 3282  
**Denmark** +45 36 36 90 90  
**France** +33 1 39 30 01 10  
**Germany** +49 6126 991 0  
**India** +91 22 2764 2735

**Ireland** +353 1 644 0064  
**Italy** +39 02 51 62 1267  
**Japan** +81 6 6885 1213  
**Korea** +82 2 3420 8600  
**Singapore** +65 6289 1190

**Sweden** +46 8 473 3380  
**Switzerland** +41 62 205 9966  
**Taiwan** +886 2 8751 6655  
**UK** +44 1276 691722  
**USA and Canada** +847 295 7500

**Thermo**  
SCIENTIFIC

Part of Thermo Fisher Scientific