

# Facing a special health condition?

**Academic accommodations  
and disability-related support**  
for temporary and chronic disabilities

Official disability status optional

## Impairments

visual, mobility, hearing,  
cognitive; mental health  
disorders...



## Illnesses

neurological; organic  
diseases, functional  
disorders...



## Injuries

over the course of  
the year



## Pregnancy

at-risk pregnancies or  
hazardous study courses



# Relevant contacts



University health center  
"Médecine préventive"

## **Provides you with medical advice**

and recommendations for academic  
and testing accommodations

63, avenue de Lattre de Tassigny  
18020 Bourges Cedex

At the Bourges University  
Institute of Technology (IUT)

Phone: +33 2 48 23 80 83

Email: [sante-bourges@univ-orleans.fr](mailto:sante-bourges@univ-orleans.fr)

Monday-Thursday 8:30 am - 5:00 pm  
Friday 8:30 am - 1:30 pm  
Open all day



Disability coordination office  
"Passerelle Handicap"

## **Implements your academic accommodations**

with your department's disability  
advisors and with you

2, rue de Tours  
45072 Orléans Cedex 2

"Maison de l'étudiant" (student services)  
Ground floor, to the right

Phone: +33 2 38 41 71 76

Email: [passerelle.handicap@univ-orleans.fr](mailto:passerelle.handicap@univ-orleans.fr)

Monday-Thursday 8:30 am - 6:30 pm  
Friday 8:30 am - 6:00 pm  
Open all day

# Location

## Directions to the university health center (Bourges)

- **By car:**

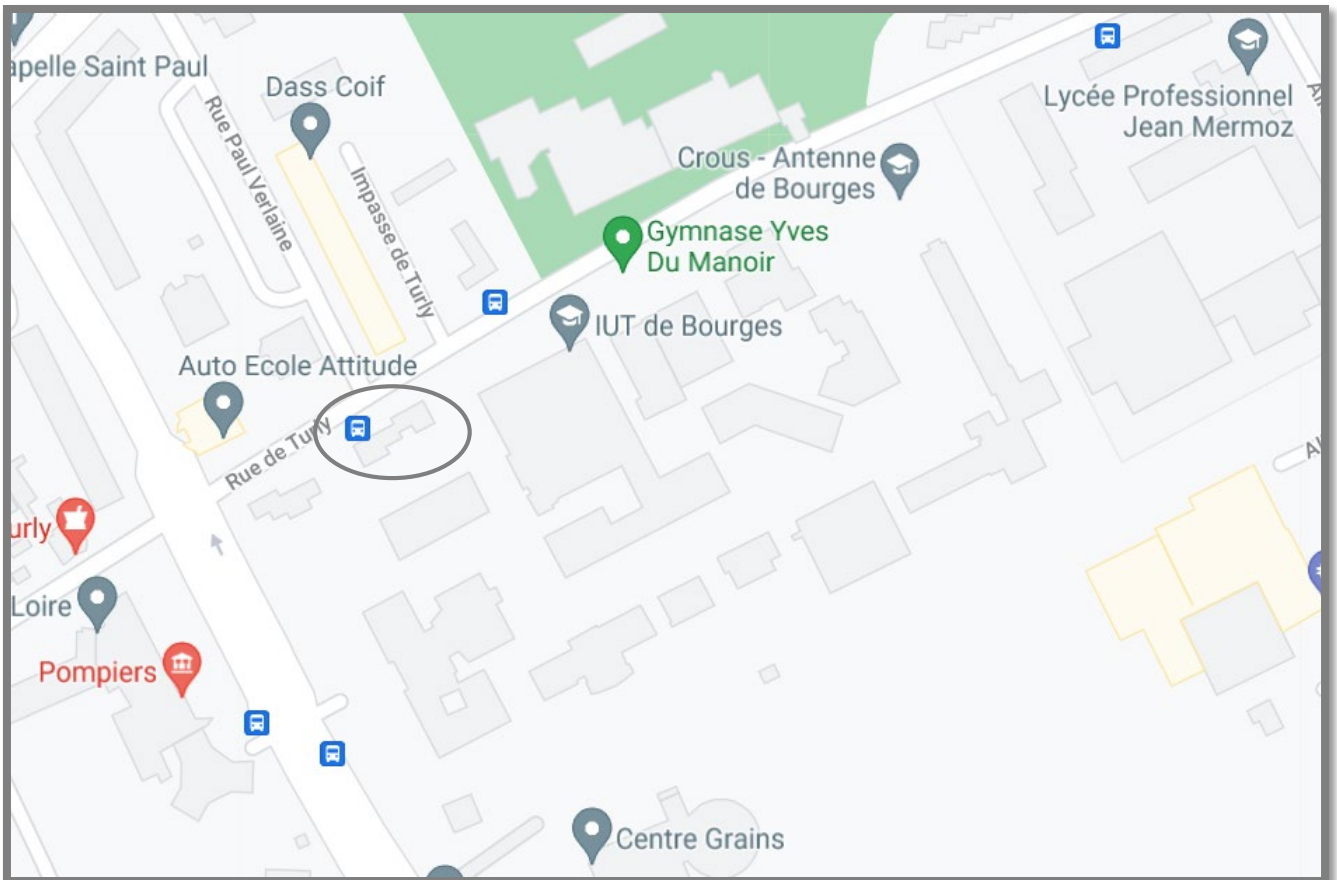
Highway A71: exit 7 (Bourges)  
Bypass ("rocade"): follow the signs towards Montargis

- **By train:**

Bourges station  
20-minute walk or 10-minute bus ride (line B) to the IUT

- **By bus:**

Line B - stop at Turly  
Line 7 - stop at De Lattre



### **Student opening hours:**

Monday-Thursday 8:30 am - 5:00 pm

Friday 8:30 am - 1:30 pm

Open all day

# Location

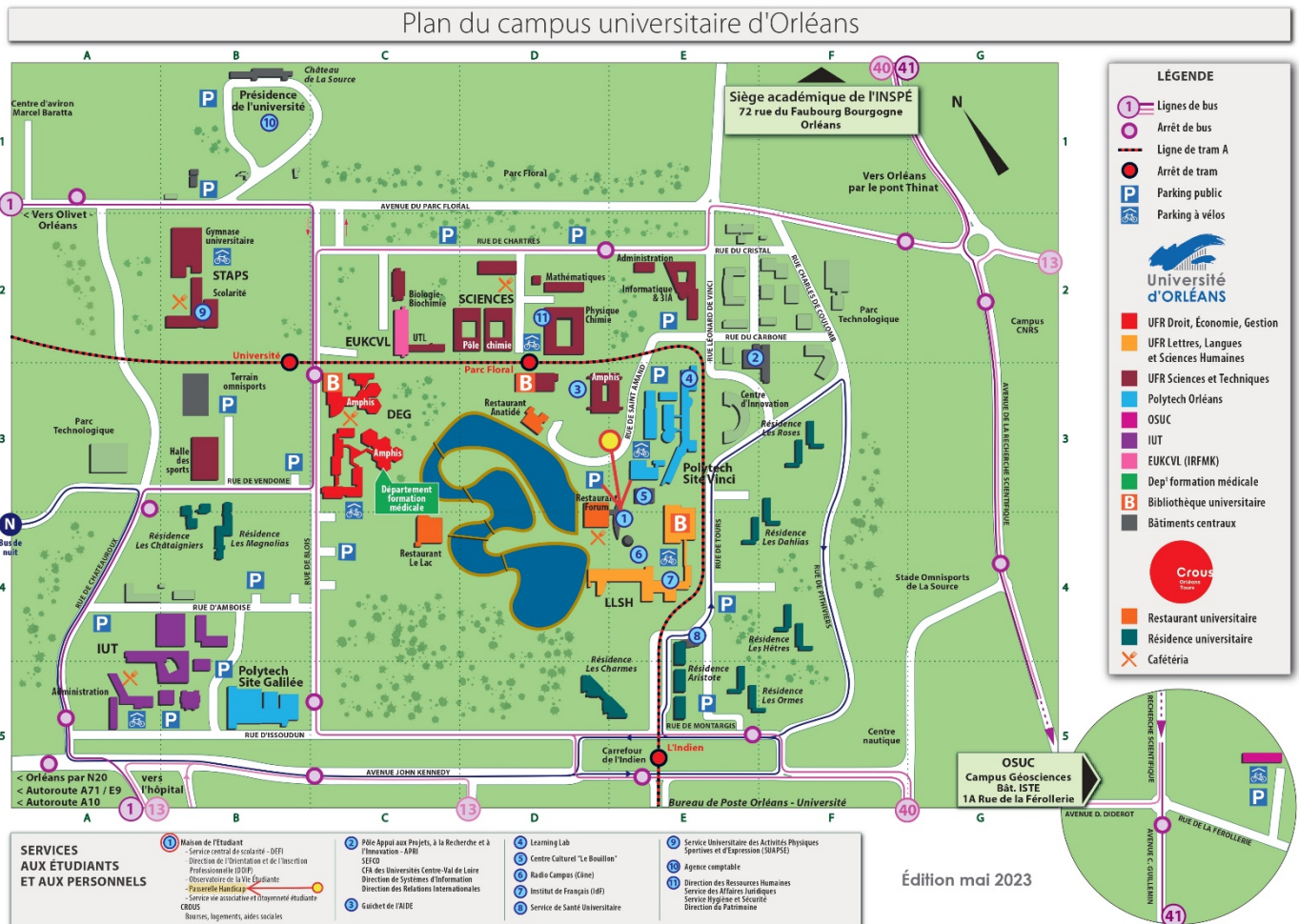
## Directions to the Passerelle Handicap (Orléans)

- **By tram:**

Line A - stop at Parc Floral or at L'Indien  
(You can catch tram A at the main  
"Gare d'Orléans" train station)

- **By bus:**

Line 40 - stop at Parc Floral



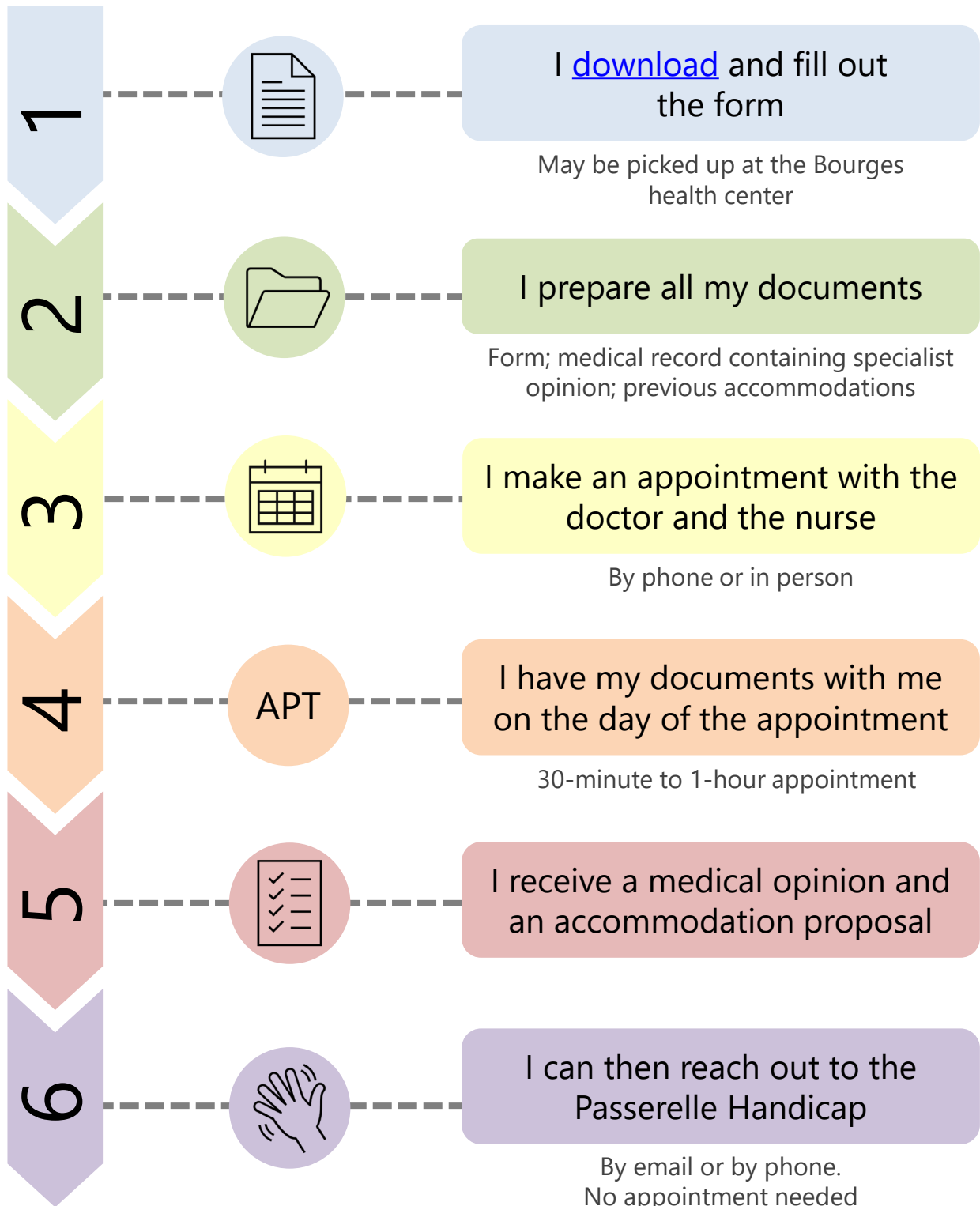
### Student opening hours:

Monday-Thursday 8:30 am - 6:30 pm

Friday 8:30 am - 6:00 pm

Open all day

# Steps of the procedure



## The Passerelle Handicap:

- is the link between you and the faculty regarding your accommodations only
- implements your accommodations with you and your department's disability advisors

# Contacts\*

Faculty disability advisor

Administrative disability advisor

\*May change over the course of the year

Science and Technology  
(UFR Sciences)

Caroline WEST

+33 2 38 49 47 78

[caroline.west@univ-orleans.fr](mailto:caroline.west@univ-orleans.fr)

Science and Technology of  
Sports and Physical Activity  
(UFR STAPS)

Sandrine SCHIANO-LOMORIELLO

[sandrine.schiano-lomoriello@univ-orleans.fr](mailto:sandrine.schiano-lomoriello@univ-orleans.fr)

Clémence MARTINEAU

+33 2 38 41 71 98

[clemence.martineau@univ-orleans.fr](mailto:clemence.martineau@univ-orleans.fr)

Clémence MARTINEAU

+33 2 38 41 71 98

[clemence.martineau@univ-orleans.fr](mailto:clemence.martineau@univ-orleans.fr)

Literature, Languages  
and Humanities  
(UFR LLSH)

Philippe GODIVEAU

+33 2 38 49 24 76

[philippe.godiveau@univ-orleans.fr](mailto:philippe.godiveau@univ-orleans.fr)

Law, Economics  
and Management  
(UFR DEG)

Mehdi DE LA ROCHEFOUCAULD

[mehdi.de-la-rochefoucauld@univ-orleans.fr](mailto:mehdi.de-la-rochefoucauld@univ-orleans.fr)

Philippe FERRANDEZ

[philippe.ferrandez@univ-orleans.fr](mailto:philippe.ferrandez@univ-orleans.fr)

Amina BEN YAHIA

02 38 41 73 63

[deg.accompagnementhandicap@univ-orleans.fr](mailto:deg.accompagnementhandicap@univ-orleans.fr)

# Contacts\*

Faculty disability advisor

Administrative disability advisor

\*May change over the course of the year

Polytech  
engineering faculty

Jean-Michel FAVIE

+33 2 38 49 43 89

[jean-michel.favie@univ-orleans.fr](mailto:jean-michel.favie@univ-orleans.fr)

Science and Technology of  
Sports and Physical Activity  
(UFR STAPS) (Bourges)

Nadia PELLERIN

+33 2 48 27 27 31

[nadia.pellerin@univ-orleans.fr](mailto:nadia.pellerin@univ-orleans.fr)

University science unit  
(Bourges)

Nadia PELLERIN

+33 2 48 27 27 31

[nadia.pellerin@univ-orleans.fr](mailto:nadia.pellerin@univ-orleans.fr)

University center for  
legal studies  
(Bourges)

Célia LAFAGE

+33 2 48 27 27 59

[scolarite.bourges.deg@univ-orleans.fr](mailto:scolarite.bourges.deg@univ-orleans.fr)

University school of  
physiotherapy (EUKCVL)

Vanessa JOUET

+33 2 38 41 71 71

[vanessa.jouet@univ-orleans.fr](mailto:vanessa.jouet@univ-orleans.fr)

OSUC

Universe science observatory in  
the Centre-Val de Loire region

Fabienne GENTILLET

02 38 49 49 41

[fabienne.gentillet@univ-orleans.fr](mailto:fabienne.gentillet@univ-orleans.fr)

# Contacts\*

Faculty disability advisor

Administrative disability advisor

\*May change over the course of the year

IUT: university institute of technology

## IUT of Orléans

Marina LICHERON

+33 2 38 49 44 39

[marina.licheron@univ-orleans.fr](mailto:marina.licheron@univ-orleans.fr)

Geneviève BEGUIN

+33 2 38 49 44 72

[genevieve.beguin@univ-orleans.fr](mailto:genevieve.beguin@univ-orleans.fr)

## IUT of Bourges

Olivier PENNETIER

+33 2 48 23 80 67

[olivier.pennetier@univ-orleans.fr](mailto:olivier.pennetier@univ-orleans.fr)

## IUT of Indre

Armelle MALLET

+33 2 54 08 25 63

[armelle.mallet@univ-orleans.fr](mailto:armelle.mallet@univ-orleans.fr)

Laëtitia CIBOIS

02 54 03 59 03

[laetitia.cibois@univ-orleans.fr](mailto:laetitia.cibois@univ-orleans.fr)

## IUT of Chartres

Laurent HENRY

+33 2 37 91 83 14

[laurent.henry@univ-orleans.fr](mailto:laurent.henry@univ-orleans.fr)

Valérie LONGO

02 37 91 83 09

[valerie.longo@univ-orleans.fr](mailto:valerie.longo@univ-orleans.fr)



# Contacts\*

Faculty disability advisor

Administrative disability advisor

\*May change over the course of the year

INSPE: higher national institute of teaching and education

## INSPE Loiret

Sylvie QUITTELIER

+33 2 38 49 27 00

[sylvie.quittelier@univ-orleans.fr](mailto:sylvie.quittelier@univ-orleans.fr)

## INSPE Cher

Véronique FRANCIS

+33 2 48 20 19 48

[veronique.francis@univ-orleans.fr](mailto:veronique.francis@univ-orleans.fr)

## INSPE Indre-et-Loire

Véronique PARDIEU

+33 2 47 42 71 39

[veronique.pardieu@univ-orleans.fr](mailto:veronique.pardieu@univ-orleans.fr)

## INSPE Indre

Magali NOYER-MARTIN

+33 2 54 08 21 32

[magali.noyer-martin@univ-orleans.fr](mailto:magali.noyer-martin@univ-orleans.fr)

## INSPE Eure-et-Loir

Delphine SERIVES

02 37 91 60 26

[delphine.serives@univ-orleans.fr](mailto:delphine.serives@univ-orleans.fr)

## INSPE Loir-et-Cher

Sylvia BOURGET

02 54 56 26 37

[sylvia.bourget@univ-orleans.fr](mailto:sylvia.bourget@univ-orleans.fr)

## INSPE Centre-Val de Loire

Rémi LEBLANC

02 38 49 26 06

[remi.leblanc@univ-orleans.fr](mailto:remi.leblanc@univ-orleans.fr)

# Contacts\*

Faculty disability advisor

Administrative disability advisor

\*May change over the course of the year

## Center for higher studies - Châteauroux

Anna DALEY

+33 2 54 08 52 88

[anna.daley@univ-orleans.fr](mailto:anna.daley@univ-orleans.fr)

Emilie MASSICARD

+33 2 54 08 52 94

[emilie.massicard@univ-orleans.fr](mailto:emilie.massicard@univ-orleans.fr)

### SEFCO

Continuing education service

Milène CARME

+33 2 38 49 46 85

[milene.carme@univ-orleans.fr](mailto:milene.carme@univ-orleans.fr)

### UNIVERSITY CFA

Apprentice training center

Orléans-Tours :

Delphine HAMELIN

[delphine.hamelin@univ-tours.fr](mailto:delphine.hamelin@univ-tours.fr)

### DOIP

Department for career guidance  
and professional integration

Valérie BRUEZ

+33 2 38 41 71 64

[valerie.bruez@univ-orleans.fr](mailto:valerie.bruez@univ-orleans.fr)

### DRI

Department of international relations

Stéphanie INGRAND

+33 2 38 49 49 49

[stephanie.ingrand@univ-orleans.fr](mailto:stephanie.ingrand@univ-orleans.fr)

# Contacts\*

---

Faculty disability advisor

Administrative disability advisor

\*May change over the course of the year

## CROUS

Regional student social services

Johanna DE OLIVEIRA

[handicap@crous-orleans-tours.fr](mailto:handicap@crous-orleans-tours.fr)

---

## University libraries

Law, Economics and Management (DEG)

François-Xavier WINTJENS

[francois-xavier.wintjens@univ-orleans.fr](mailto:francois-xavier.wintjens@univ-orleans.fr)

Literature, Languages and Humanities (LLSH)

Renaud CHADELAT

[renaud.chadelat@univ-orleans.fr](mailto:renaud.chadelat@univ-orleans.fr)

Science and Technology

Claire AVOL

+33 2 38 49 40 68

Reception: +33 2 38 49 40 60

[claire.avol@univ-orleans.fr](mailto:claire.avol@univ-orleans.fr)

