

Facing a special health condition?

**Academic accommodations
and disability-related support**
for temporary and chronic disabilities

Official disability status optional

Impairments

visual, mobility, hearing,
cognitive; mental health
disorders...



Illnesses

neurological; organic
diseases, functional
disorders...



Injuries

over the course of
the year



Pregnancy

at-risk pregnancies or
hazardous study courses



Relevant contacts



University health center
"Médecine préventive"

Provides you with medical advice

and recommendations for academic
and testing accommodations

63, avenue de Lattre de Tassigny
18020 Bourges Cedex

At the Bourges University
Institute of Technology (IUT)

Phone: +33 2 48 23 80 83

Email: sante-bourges@univ-orleans.fr

Monday-Thursday 8:30 am - 5:00 pm
Friday 8:30 am - 1:30 pm
Open all day



Disability coordination office
"Passerelle Handicap"

Implements your academic accommodations

with your department's disability
advisors and with you

2, rue de Tours
45072 Orléans Cedex 2

"Maison de l'étudiant" (student services)
Ground floor, to the right

Phone: +33 2 38 41 71 76

Email: passerelle.handicap@univ-orleans.fr

Monday-Thursday 8:30 am - 6:30 pm
Friday 8:30 am - 6:00 pm
Open all day

Location

Directions to the university health center (Bourges)

- **By car:**

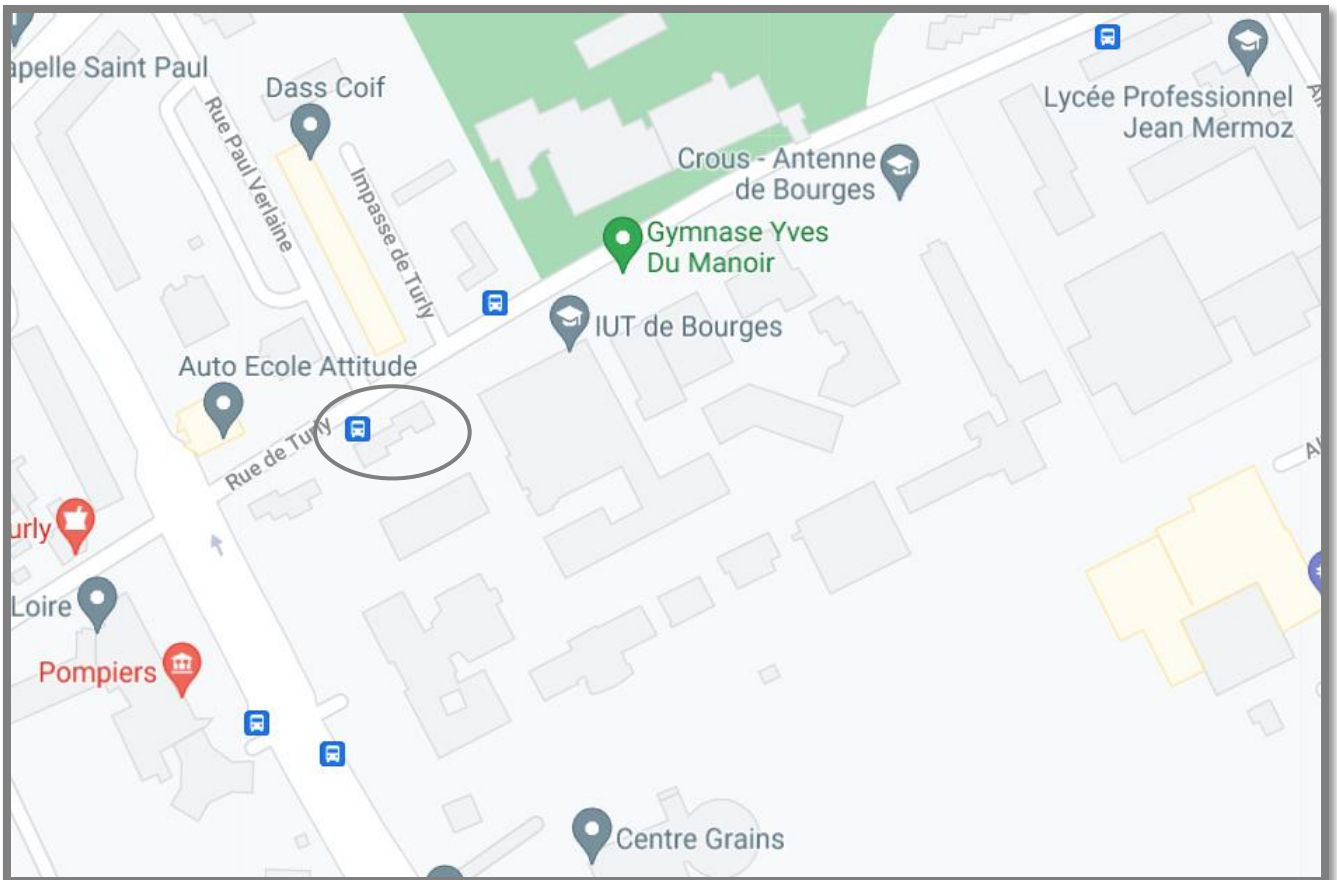
Highway A71: exit 7 (Bourges)
Bypass ("rocade"): follow the signs towards Montargis

- **By train:**

Bourges station
20-minute walk or 10-minute bus ride (line B) to the IUT

- **By bus:**

Line B - stop at Turly
Line 7 - stop at De Lattre



Student opening hours:

Monday-Thursday 8:30 am - 5:00 pm

Friday 8:30 am - 1:30 pm

Open all day

Location

Directions to the Passerelle Handicap (Orléans)

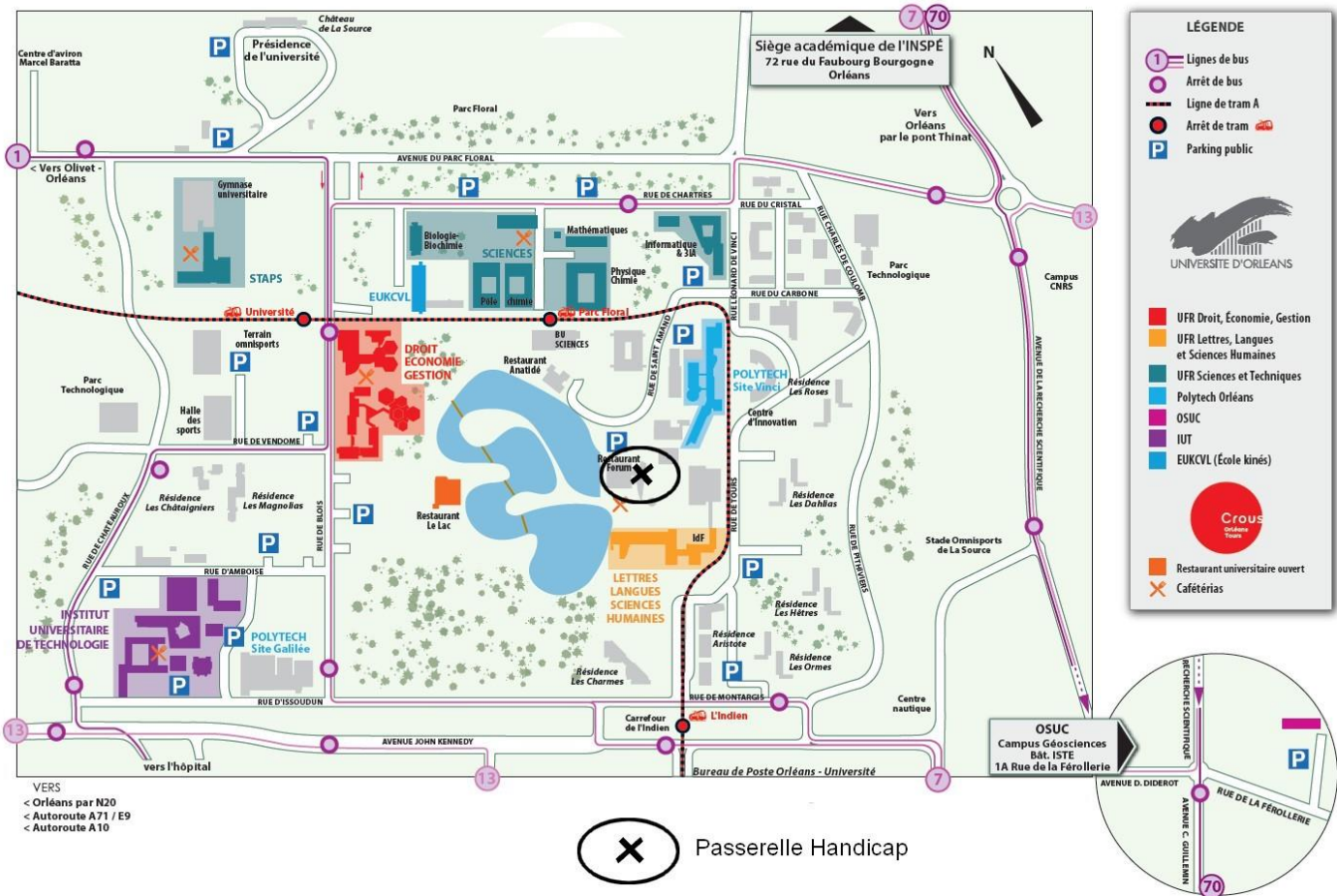
▪ By tram:

Line A - stop at Parc Floral or at L'Indien
(You can catch tram A at the main "Gare d'Orléans" train station)

▪ By bus:

Line 40 (previously line 7) - stop at Parc Floral

Plan du campus universitaire d'Orléans



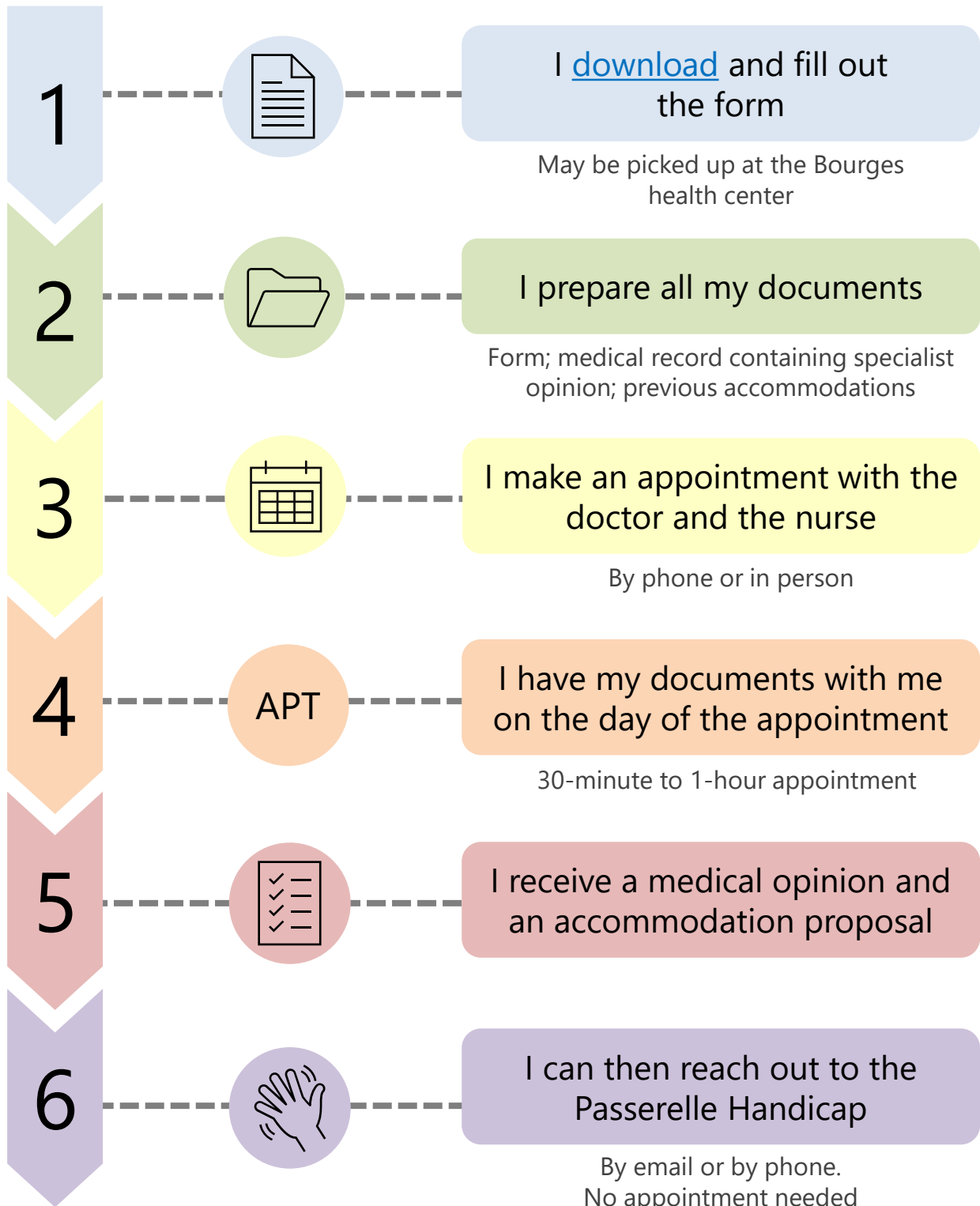
Student opening hours:

Monday-Thursday 8:30 am - 6:30 pm

Friday 8:30 am - 6:00 pm

Open all day

Steps of the procedure



The Passerelle Handicap:

- is the link between you and the faculty regarding your accommodations only
- implements your accommodations with you and your department's disability advisors

Contacts*

Faculty disability advisor

Administrative disability advisor

*May change over the course of the year

Science and Technology
(UFR Sciences)

Caroline WEST

+33 2 38 49 47 78

caroline.west@univ-orleans.fr

Science and Technology of
Sports and Physical Activity
(UFR STAPS)

Sandrine SCHIANO-LOMORIELLO

sandrine.schiano-lomoriello@univ-orleans.fr

Clémence MARTINEAU

+33 2 38 41 71 98

clemence.martineau@univ-orleans.fr

Clémence MARTINEAU

+33 2 38 41 71 98

clemence.martineau@univ-orleans.fr

Literature, Languages
and Humanities
(UFR LLSH)

Philippe GODIVEAU

+33 2 38 49 24 76

philippe.godiveau@univ-orleans.fr

Law, Economics
and Management
(UFR DEG)

Mehdi DE LA ROCHEFOUCAULD

mehdi.de-la-rochefoucauld@univ-orleans.fr

Philippe FERRANDEZ

philippe.ferrandez@univ-orleans.fr

Céline MARESCA

+33 2 38 41 73 63

deg.accompagnementhandicap@univ-orleans.fr

Contacts*

Faculty disability advisor

Administrative disability advisor

*May change over the course of the year

Polytech
engineering faculty

Jean-Michel FAVIE

+33 2 38 49 43 89

jean-michel.favie@univ-orleans.fr

Science and Technology of
Sports and Physical Activity
(UFR STAPS) (Bourges)

Nadia PELLERIN

+33 2 48 27 27 31

nadia.pellerin@univ-orleans.fr

University science unit
(Bourges)

Nadia PELLERIN

+33 2 48 27 27 31

nadia.pellerin@univ-orleans.fr

University center for
legal studies
(Bourges)

Célia LAFAGE

+33 2 48 27 27 59

scolarite.bourges.deg@univ-orleans.fr

University school of
physiotherapy (EUKCVL)

Vanessa JOUET

+33 2 38 41 71 71

vanessa.jouet@univ-orleans.fr

OSUC

Universe science observatory in
the Centre-Val de Loire region

Martine BODUSSEAU

+33 2 38 49 49 12

martine.bodusseau@univ-orleans.fr

Contacts*

Faculty disability advisor

Administrative disability advisor

*May change over the course of the year

IUT: university institute of technology

IUT of Orléans

Marina LICHERON

+33 2 38 49 44 39

marina.licheron@univ-orleans.fr

Geneviève BEGUIN

+33 2 38 49 44 72

genevieve.beguin@univ-orleans.fr

IUT of Bourges

Olivier PENNETIER

+33 2 48 23 80 67

olivier.pennetier@univ-orleans.fr

Catherine LEPAGNIER

+33 2 48 23 82 34

catherine.lepagnier@univ-orleans.fr

IUT of Indre

Armelle MALLET

+33 2 54 08 25 63

armelle.mallet@univ-orleans.fr

Sylvie PLESSARD

+33 2 54 03 59 04

sylvie.plessard1@univ-orleans.fr

IUT of Chartres

Laurent HENRY

+33 2 37 91 83 14

laurent.henry@univ-orleans.fr

Thierry LE GRIVES

+33 2 37 91 83 33

thierry.le-grives@univ-orleans.fr

Contacts*

Faculty disability advisor

Administrative disability advisor

*May change over the course of the year

INSPE: higher national institute of teaching and education

INSPE Loiret

Sylvie QUITTELIER

+33 2 38 49 27 00

sylvie.quittelier@univ-orleans.fr

INSPE Cher

Véronique FRANCIS

+33 2 48 20 19 48

veronique.francis@univ-orleans.fr

INSPE Indre-et-Loire

Véronique PARDIEU

+33 2 47 42 71 39

veronique.pardieu@univ-orleans.fr

INSPE Indre

Magali NOYER-MARTIN

+33 2 54 08 21 32

magali.noyer-martin@univ-orleans.fr

INSPE Eure-et-Loir

Chafia SERY

+33 2 37 30 23 30

chafia.sery@univ-orleans.fr

INSPE Centre-Val de Loire

scolarite.inspe@univ-orleans.fr

INSPE Loir-et-Cher

Sylvia BOURGET

+33 2 38 49 26 37

sylvia.bourget@univ-orleans.fr

Contacts*

Faculty disability advisor

Administrative disability advisor

*May change over the course of the year

Center for higher studies - Châteauroux

Anna DALEY

+33 2 54 08 52 88

anna.daley@univ-orleans.fr

Emilie MASSICARD

+33 2 54 08 52 94

emilie.massicard@univ-orleans.fr

SEFCO

Continuing education service

Milène CARME

+33 2 38 49 46 85

milene.carme@univ-orleans.fr

UNIVERSITY CFA

Apprentice training center

Orléans-Tours:

Orléans: Caroline FROMENTIN

Tours: Sandra ROMANA-DUTERIEZ

referenthandicap@cfa-univ.fr

DOIP

Department for career guidance
and professional integration

Valérie BRUEZ

+33 2 38 41 71 64

valerie.bruez@univ-orleans.fr

DRI

Department of international relations

Stéphanie INGRAND

+33 2 38 49 49 49

stephanie.ingrand@univ-orleans.fr

Contacts*

Faculty disability advisor

Administrative disability advisor

*May change over the course of the year

DRP

Department for research and partnerships

Aurore DUPONT-CHAUVET

+33 2 38 49 43 12

aurore.dupont-chauvet@univ-orleans.fr

CROUS

Regional student social services

Christophe SAULAY

+33 2 47 60 90 36

handicap@crous-orleans-tours.fr

University libraries

Law, Economics and Management (DEG)

François-Xavier WINTJENS

francois-xavier.wintjens@univ-orleans.fr

Literature, Languages and Humanities (LLSH)

Renaud CHADELAT

renaud.chadelat@univ-orleans.fr

Science and Technology

Claire AVOL

+33 2 38 49 40 68

Reception: +33 2 38 49 40 60

claire.avol@univ-orleans.fr

