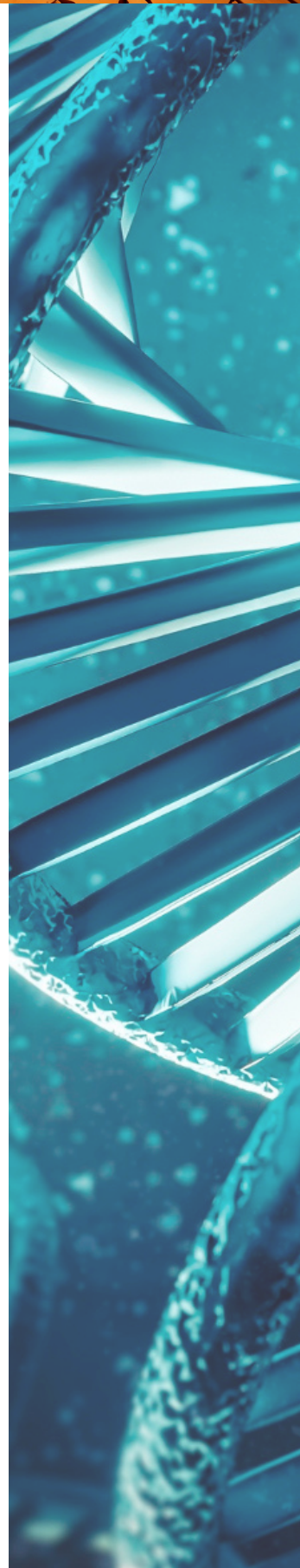


# Program of the Workshop

## Day 1: November 6, 2024



9h00 **Registration and Tea/coffee**  
9h30 **Inauguration**

9h30 **Welcome and inaugural session**  
9h35 **Pr Luigi AGROFOGLIO**, Vice-président international relations

9h35 **Welcome message**  
9h40 **Pr Steeve THANY**, Head of the laboratory P2E

9h40 **Inauguration**  
9h45 **Dr Nitin SETH**, Director of the CEFIPRA

### Session 1: Signaling pathways

**Co-chairman: Sabine CARPIN and François HERICOURT**

9h45 **Osmosensing and its downstream cascade operating under**  
10h10 **stress in rice** by **Ashwani PAREEK**

10h10 **Questions**  
10h15

10h15 **MultiStep Phosphorelay (MSP) and drought perception in**  
10h40 **Poplar: overview and future prospects** by **Sabine CARPIN**

10h40 **Questions**  
10h45

10h45 **Searching for osmosensing determinants and possible ligands**  
11h10 **of Histidine kinase in poplar: toward application in plant**  
**drought tolerance** by **François HERICOURT**

11h10 **Questions**  
11h15

11h15 **Tea/coffee break**  
11h30

11h30 **Mitochondrial retrograde signaling and oxidative stress in**  
11h55 **plants: Interplay of Calcium and ROS** by **Girdhar K. PANDEY**

11h55 **Questions**  
12h00

12h00 **Drought responses and signaling in trees modulated by stress**  
12h25 **combination or ectomycorrhizal symbiosis** by  
**Marie-Noëlle VAULTIER**

12h25 **Questions**  
12h30

# Program of the Workshop

## Day 1: November 6, 2024

12h30  
14h00 **Lunch Break**

14h00 **Hybrid histidine kinases: major sensing proteins in fungi** by [Nicolas PAPON](#)  
14h25

14h25  
14h30 **Questions**

14h30  
15h00 **Discussion about session 1**

### Session 2: Genome Editing

Chairman: Ashwani PAREEK

15h00 **Germplasm and Genes for Water Use Efficiency (WUE) and Drought Stress Tolerance in Rice** by [Vishwanathan CHINNUSAMY](#)  
15h25

15h25  
15h30 **Questions**

15h30 **Genome editing in poplar: current achievements and future objectives** by [Annabelle DEJARDIN](#)  
15h55

15h55  
16h00 **Questions**

16h00  
16h30 **Discussion about session 2**

16h30  
17h00 **Tea/coffee break**

### Session 3: Plant responses to drought and environmental stresses

Chairman: Ashwani PAREEK

17h00 **Tackling drought stress in rice by balancing phytohormone levels** by [Sneh Lata SINGLA - PAREEK](#)  
17h25

17h25  
17h30 **Questions**

17h30 **Influence of flowering time on drought stress tolerance in rice** by [Manjari MISHRA](#)  
17h55

17h55  
18h00 **Questions**

**Break**

20h00  
22h00 **Dinner**



# Program of the Workshop

## Day 2: November 7, 2024

9h00  
9h30

**Morning Welcoming Tea/coffee**

### Session 3: Plant responses to drought and environmental stresses

Chairwoman: Sneh L SINGLA-PAREEK

9h30  
9h55

**A novel rice mutant with unique pattern of metabolites and gene expression shows reproductive stage drought tolerance** by Jayram BAGRI

9h55  
10h00

**Questions**

10h00  
10h25

**An interplay of MPK4, PIF4 and chromatin modification by ARP6 mediated H2A.Z deposition during drought and thermosensing in Arabidopsis** by Alok SINHA

10h25  
10h30

**Questions**

10h30  
10h55

**Plant tolerance to abiotic stresses: the role of arbuscular mycorrhizal symbiosis** by Pierre-Emmanuel COURTY

10h55  
11h00

**Questions**

11h00  
11h30

**Tea/coffee break**

11h30  
11h55

**The role of nitric oxide in biogenesis of mitochondria under osmotic stress recovery in Arabidopsis** by Jagadis KAPUGANTI

11h55  
12h00

**Questions**

12h00  
12h25

**Uncovering genetic traits for heat and drought resilience in direct-seeded rice** by Rajeev BAHUGUNA

12h25  
12h30

**Questions**

12h30  
13h00

**General questions about the morning session**

13h00  
14h30

**Lunch break**





# Program of the Workshop

## Day 2: November 7, 2024

### Session 3: Plant responses to drought and environmental stresses

Chairman: Frédéric LAMBLIN

---

14h30 **Genomics-guided discovery of osmotic and salinity stress signalling and response pathway genes in crop plants** by **Anil Kumar SINGH**  
14h55

---

14h55 **Questions**  
15h00

---

15h00 **A comparative approach of the poplar response to water stress: a focus on growth and transcriptional regulation** by **Irène HUMMEL**  
15h25

---

15h25 **Questions**  
15h30

---

15h30 **General questions about the afternoon session**  
16h00

---

16h00 **Tea/coffee break**  
16h30

---

16h30 **General Discussion about Session 3**  
17h00

---

17h00 **Round Table discussions**  
18h00

---

**Break**

---

20h00 **Dinner**  
22h00

---



# Program of the Workshop

## Day 3: November 8, 2024

9h00  
9h30 **Morning Welcoming Tea/coffee**

### Session 3: Plant responses to drought and environmental stresses Chairman: François HERICOURT

9h30  
9h55 **The Root Extracellular Trap of black poplar (*P. nigra* L.):  
characterization and functional approaches by Frédéric  
LAMBLIN**

9h55  
10h00 **Questions**

10h00  
10h25 **Toward the identification of molecular actors responsible for  
the generation of maturation stress in the secondary cell wall of  
poplar tension wood fibres by Gilles PILATE**

10h25  
10h30 **Questions**

10h30  
10h45 **Tea/coffee break**

10h45  
11h10 **Loire Valley's black poplar associated rhizobacteria and their  
potential in phytoremediation programs; initial steps and  
perspectives by Marta SENA-VELEZ**

11h10  
11h15 **Questions**

11h15  
11h45 **General questions about the morning session**

11h45  
12h15 **Round Table and General discussion-Closure**

12h15  
14h00 **Lunch Break**

14h00  
18h00 **Visit**

**Break**

20h00  
22h00 **Dinner**

